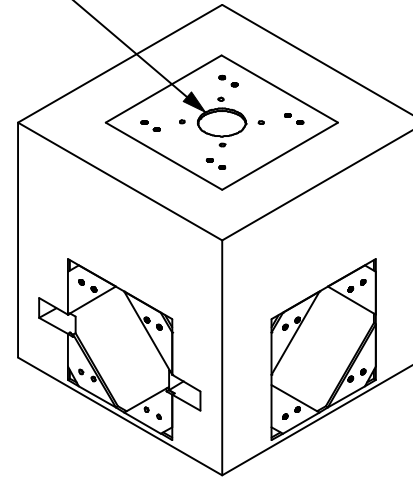


Top View

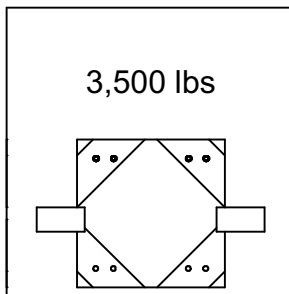
20.5" Truss 5 Side Connection

20.5" & 12" Truss Connection

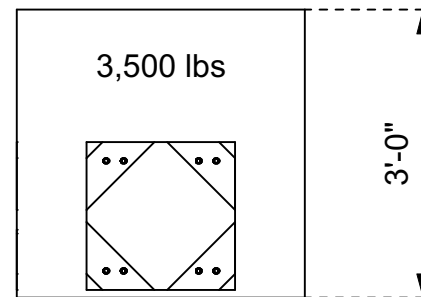


Iso View

Note: Spacers Available To Attach To Any Corner Or Edge



Front View



Right View

drawing title name:	Accurate Staging	project name:	Stock Gear	date:	11/24/15	rev:	1.00
modified by:		file name:	3,500 lbs Ballast	scale:	NTS	sheet #:	
<small>This drawing is the property of Accurate Staging and can not be duplicated, modified or used for any other purposes without written permission from Accurate Staging. Use of this drawing for bidding is hereby prohibited. Verify all dimensions, specifications and conditions before using this drawing for construction.</small>							
www accuratestaging.com							

